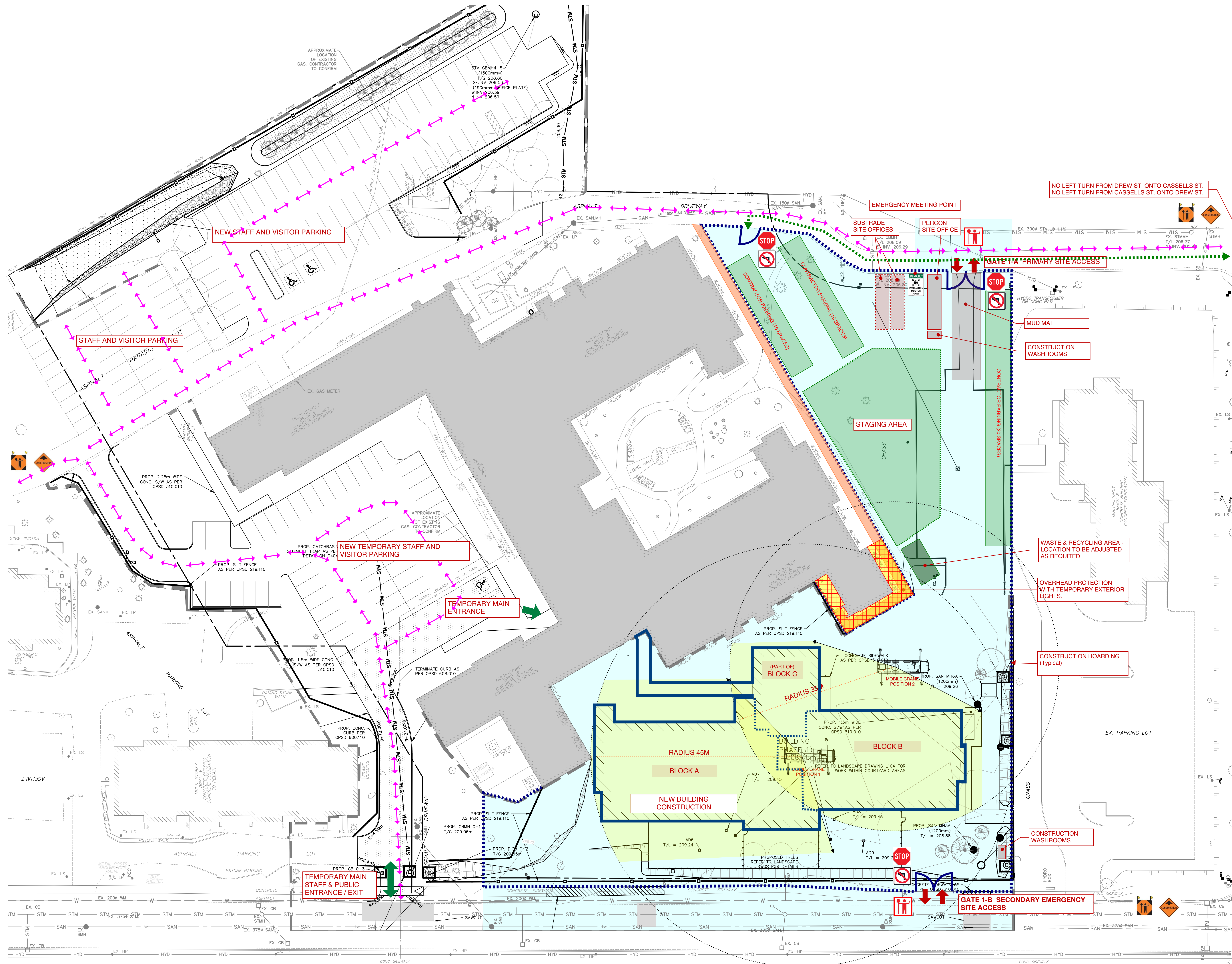


- NOTE:**
1. REVISIONS/CHANGES TO PREVIOUSLY ISSUED LOGISTIC PLANS HAVE BEEN INDICATED WITH RED REVISION CLOUDS.
 2. PUBLIC TRAFFIC ROUTES HAVE BEEN ADDED. FOR CLARITY THE TRAFFIC ROUTE ON THE PLANS HAS NOT BEEN CLOUDED. REFER TO LEGEND FOR PUBLIC TRAFFIC ROUTE IDENTIFICATION SYMBOL.



Request for Proposal:
CASSELLHOLME REDEVELOPMENT
EAST NIPissing HOME FOR THE AGED

RFP #: CH-2020-010

LEGEND

	CONSTRUCTION SIGNAGE: Traffic Control Person Ahead		Public Traffic Route
	CONSTRUCTION SIGNAGE: Construction Ahead		Extent of work area
	TRAFFIC CONTROL POINT: Traffic Control Personnel		Construction Traffic Route
	TEMPORARY CONSTRUCTION TRAFFIC SIGNAGE: Turning restrictions		Construction site access point
	TEMPORARY CONSTRUCTION TRAFFIC SIGNAGE: Construction stop sign		Construction gate
	TEMPORARY CONSTRUCTION DELINEATION: Barrel type work-zone separator		NEW CONSTRUCTION
	ROAD CLOSURE Construction barrier		BUILDING DEMOLITION
			EXISTING BUILDING
			BUILDING OCCUPANT EMERGENCY EXIT PATH

LOGISTICS PLAN
PHASE 1-B
NOT TO SCALE