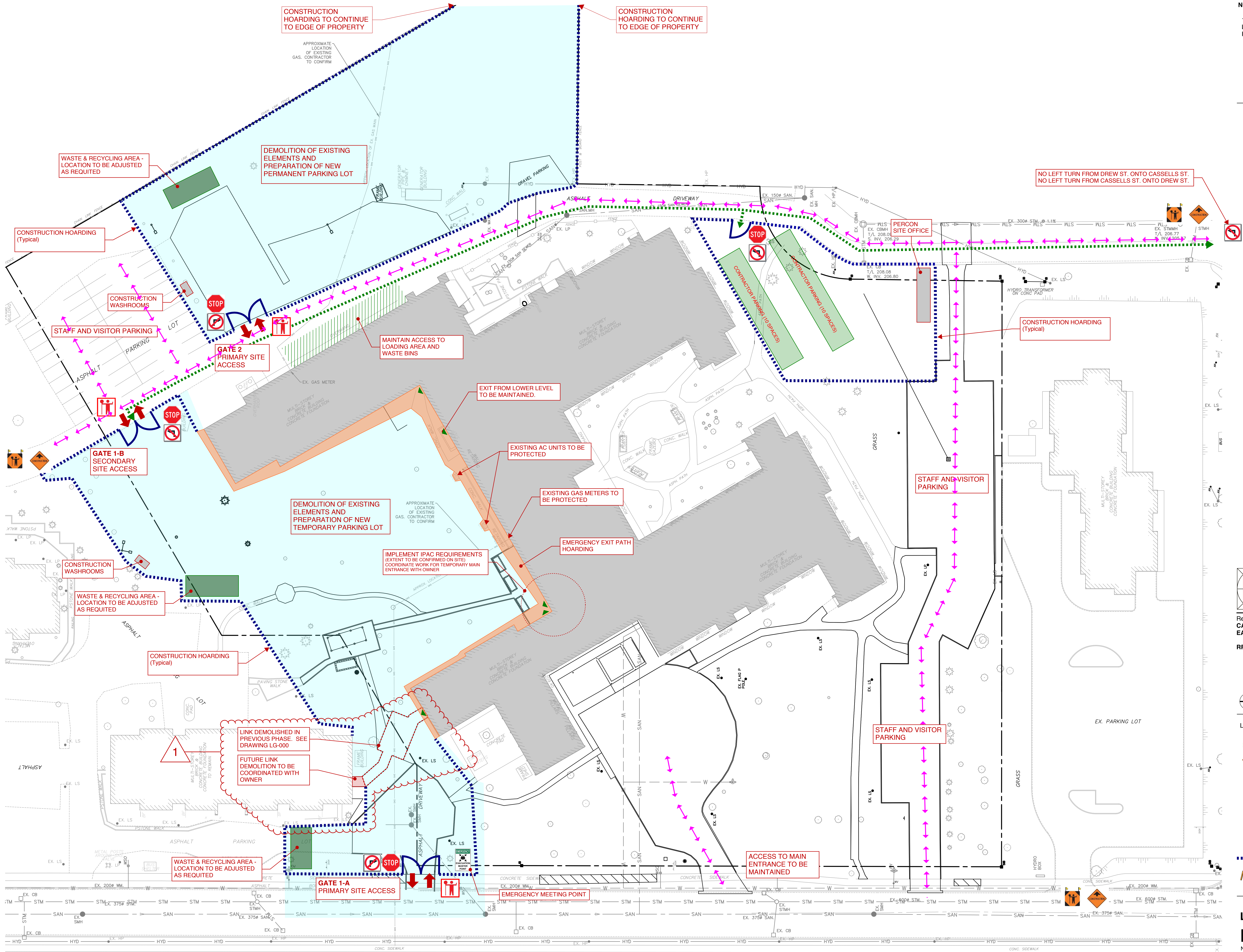


NOTE:
1. REVISIONS/CHANGES TO PREVIOUSLY ISSUED LOGISTIC PLANS HAVE BEEN INDICATED WITH RED REVISION CLOUDS.



Request for Proposal:
CASSELLHOLME REDEVELOPMENT
EAST NIPissing HOME FOR THE AGED

RFP #: CH-2020-010



LEGEND	
	Public Traffic Route
	Extent of work area
	Construction Traffic Route
	Construction site access point
	Construction gate
	NEW CONSTRUCTION
	BUILDING DEMOLITION
	EXISTING BUILDING
	BUILDING OCCUPANT EMERGENCY EXIT PATH

LOGISTICS PLAN
PHASE 1-A Rev. 1
NOT TO SCALE

DATE: 27 JANUARY 2022 DRAWING No: **LG-001**

THIS DRAWING IN ALL FORMATS (DIGITAL AND HARD COPY) AND THE INTELLECTUAL PROPERTY CONTAINED WITHIN IT, IS THE PROPERTY OF PERCON CONSTRUCTION INC. AND CANNOT BE REPRODUCED OR DISTRIBUTED WITHOUT PRIOR WRITTEN CONSENT BY PERCON CONSTRUCTION INC.